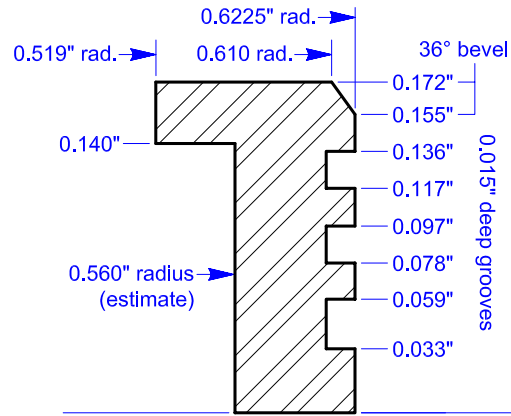
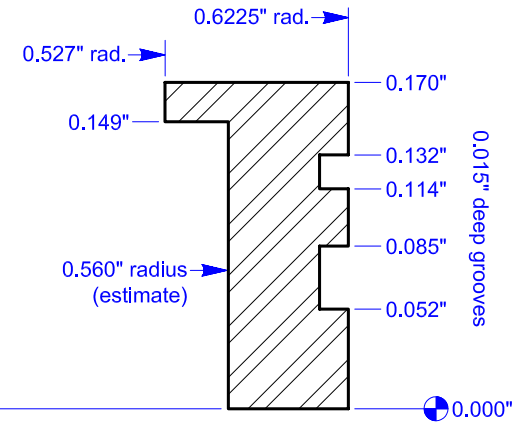


Beta hero



Iota



Kappa

(all cross section drawings on this page: 10X full scale)



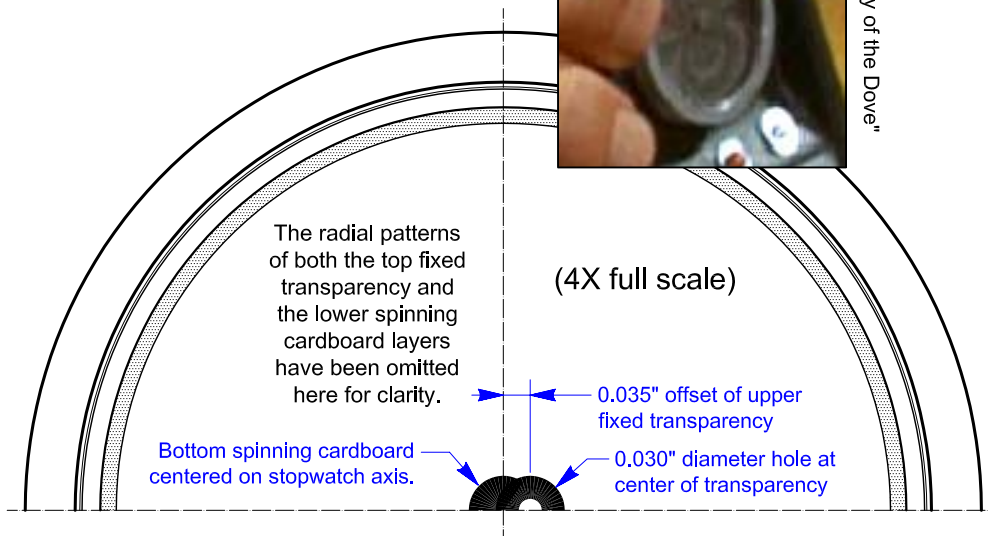
from "Day of the Dove"



from "Miri"



from Lincoln Enterprises clip

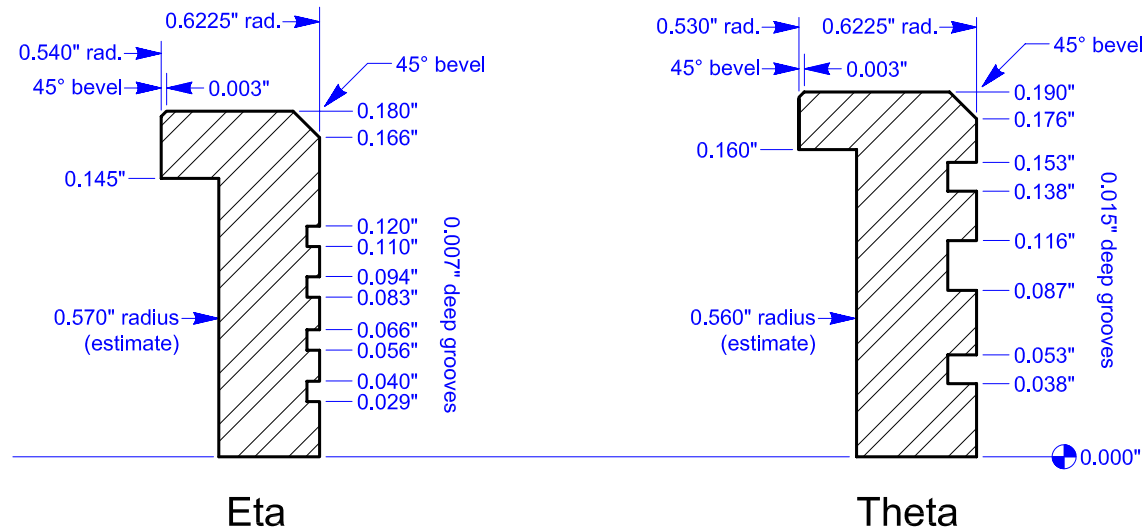


Beta hero: Moiré Pattern Positions

**Page 1 Notes:**

1. These moiré bezel ring dimensions represent our best guess only, as determined by screen caps of various clarity. An initial assumption has been made that they have the same 1.245" outer diameter as those others (Alpha, Epsilon, Zeta) that have actually been measured.
2. In Iota and Kappa, photos show evidence of one large side groove each, so the other smaller grooves shown are conjecture only - given the large one's location.
3. Beta's best close-up suggests the overall dimensions to be like Alpha's, but only the subtle hints of two grooves are visible at standard DVD resolution; these are what are drawn here. Its moiré pattern positions are based on a mere 2.5 seconds of movement seen in one episode.
4. For pattern inserts, additional photos and construction details, reference [www.HeroComm.com](http://www.HeroComm.com).

Star Trek is a Registered and Copyrighted Trademark of Paramount Pictures. All Rights Reserved. All subject matters referring to Star Trek are trademarks of Paramount Pictures.



from "Shore Leave"



and "Mirror, Mirror"

from "Bread and Circuses"

(all cross section drawings on this page: 10X full scale)

**Page 2 Notes:**

1. With the discovery of the moiré patterns and likely jewel colors for Eta and Theta, many hobbyists have been interested in building these versions too. For their aid, we offer these moiré bezel ring dimensions as a guide, representing again our best guess only from even less-clear screen caps as those on Page 1. The same initial assumption has been made that they have the 1.245" outer diameter as those actually measured.
2. The height of Theta's and the inner lip diameter of Eta's rings are based on modestly-good images. All other aspects are much less certain, though relative magnitudes are at least consistently hinted at in photos and are included here.
3. No images of Eta are sharp enough to display any direct evidence of side grooves. Zero solid data. The grooves drawn here are conjecture, though they will replicate the overall bright flashes and dark patches seen in various frames. Theta shows in "Mirror, Mirror" one likely large ring halfway down, so the rest on that one is assumed based on what else would fit.
4. For pattern inserts, additional photos and construction details, reference [www.HeroComm.com](http://www.HeroComm.com).

Star Trek is a Registered and Copyrighted Trademark of Paramount Pictures. All Rights Reserved. All subject matters referring to Star Trek are trademarks of Paramount Pictures.